



# Cyclope Internet Filtering Proxy

- Installation Guide -

<b>1. Overview</b>	<b>3</b>
<b>2. Installation</b>	<b>4</b>
2.1 System requirements	4
2.2 Cyclope Internet Filtering Proxy Installation	4
2.3 Client Browser Configuration	6
2.3.1 Internet Explorer	7
2.3.2 Mozilla Firefox	8
2.3.3 Opera	9
2.3.4 Netscape	10
<b>3. Support</b>	<b>11</b>

### 1. Overview

**Cyclope Internet Filtering Proxy** monitors the entire Internet traffic and blocks the access to websites and files according to the chosen filter. The requested web pages are displayed only if they comply with the specified filters.

Cyclope Internet Filtering Proxy comes to help companies better manage Internet usage and bandwidth consumption, reduce web browsing for personal use during working hours, eliminate explicit content websites from being accessed, protect the network against online threats, and discourage the download of unlicensed software and other copyrighted materials.

Cyclope Internet Filtering Proxy monitors the entire Internet traffic and blocks the access to websites and files according to the chosen filter. The requested web pages are displayed only if they comply with the specified filters.

Cyclope Internet Filtering Proxy is also an Internet Sharing Software, capable of providing cost effective Internet access to multiple computers via a single Internet connection.

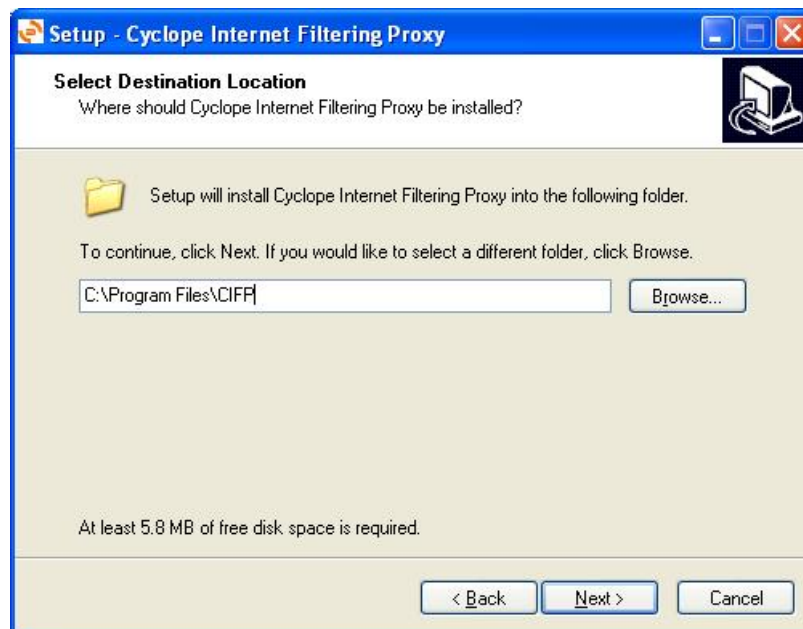
## 2. Installation

### 2.1 System requirements

Windows NT, 2000, 2003, XP  
256 MB RAM  
4 MB on Hard Disk for application files  
50MB additional storage space for log files.

### 2.2 Cyclope Internet Filtering Proxy Installation

Please run the setup file.  
In the setup please choose the installation folder where you want the program to be installed (the default folder is "Program files\CIFP")



After installation you have to configure Cyclope Internet Filtering Proxy.

Please choose an IP from the IP Addresses list, and enter a port for Cyclope Internet Filtering Proxy to listen for the connection.

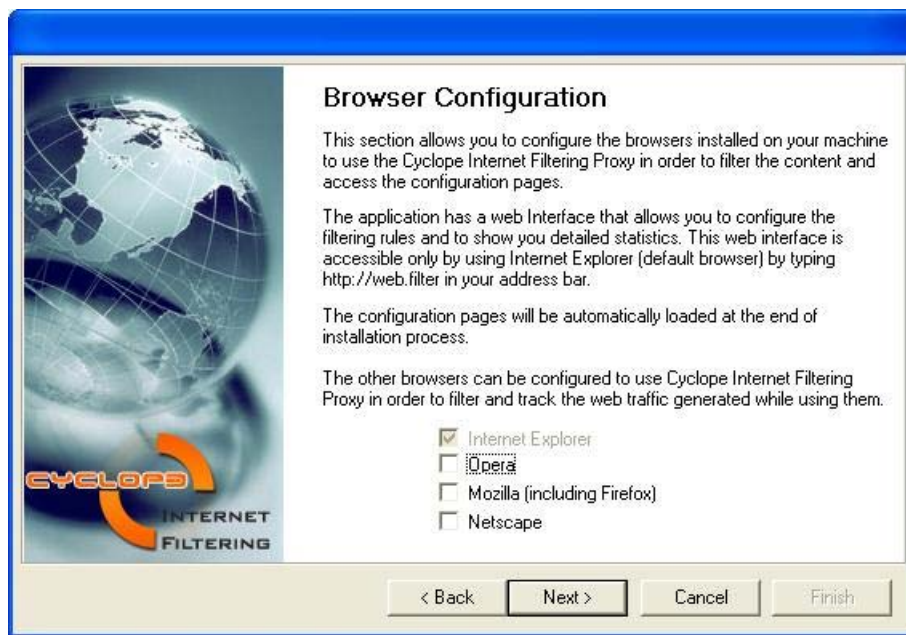
If the application is used only for the computer on which the application is installed please choose 127.0.0.1 as an IP address. Then Press the Next button.

If you are using Cyclope Internet Filtering Proxy in a network, there is an application Cyclope Internet Filtering Proxy Client Configuration that helps you to configure the

client browsers. Just enter the IP address of the computer where Cyclope Internet Filtering Proxy is installed, enter the port you defined for Cyclope Internet Filtering Proxy to listen for the connection and press the next button.



If you desire to configure your browser to work with Cyclope Internet Filtering Proxy please check the box near the name of your desired browser (you can choose more than one browser) then press the next button.



### 2.3 Client Browser Configuration

For monitoring all computers, it is compulsory that all traffic is routed through the same proxy. All network members will be asked to make some changes to the browsers they are using. This can be done manually following the instructions detailed below, or by using the Client Configuration Utility from the Cyclope Internet Filtering Proxy package.

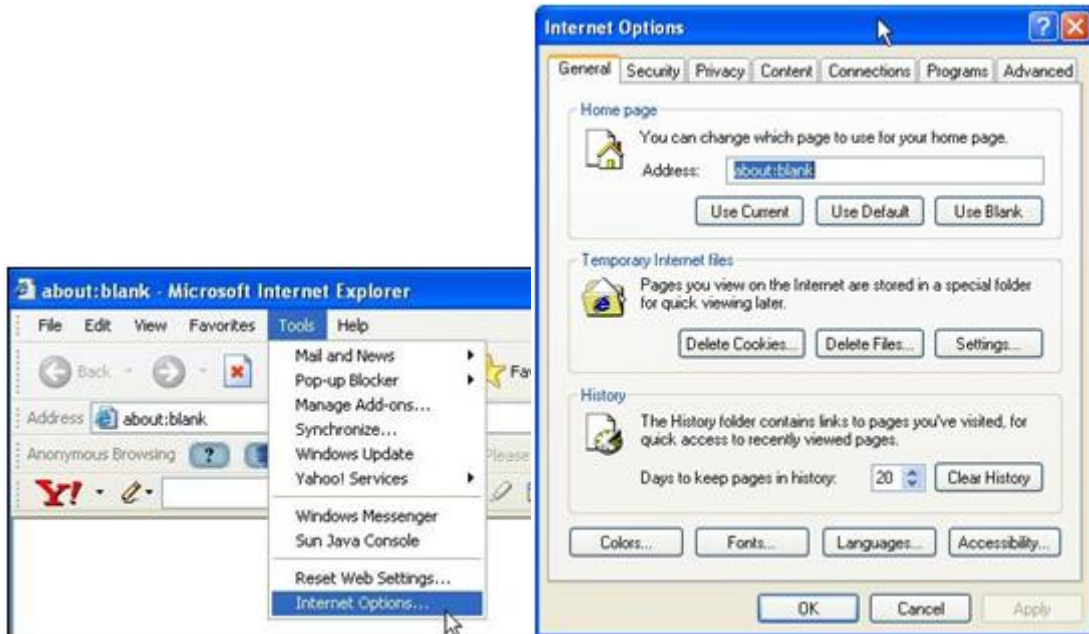
Before proceeding to the manual client browser configuration, make sure that you know:

- The server IP (the computer where the application is installed).
- The port to be used. The default application port is: 8080.

If used in network please use the configuration utility to configure the proxy to listen for connections from the network IP address of the computer where Cyclope Internet Filtering Proxy is installed, then set all internet browsers from the computer clients that are using Cyclope Internet Filtering Proxy to access the Internet via a proxy connection and the proxy address is the address of the computer where the proxy is installed. For manually configuring your browser so that the application performs successfully please follow the paths below.

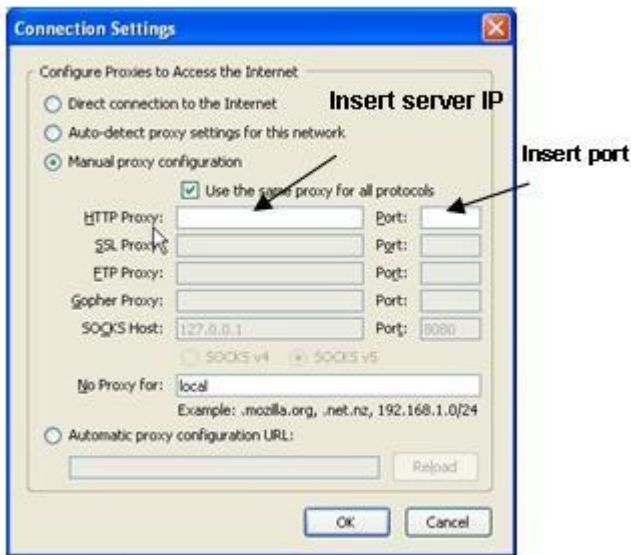
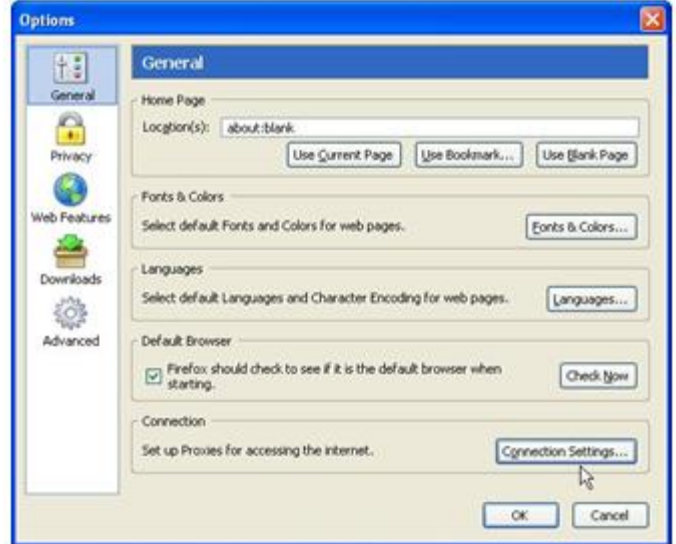
## 2.3.1 Internet Explorer

Go to Tools/Internet Options/Connections/LAN Settings/ Use a proxy server for your LAN/ Address - insert server IP (the computer where Cyclope Internet Filtering Proxy is installed), then insert the port. The DEFAULT PORT is 8080. It can be changed using the configuration utility.



### 2.3.2 Mozilla Firefox

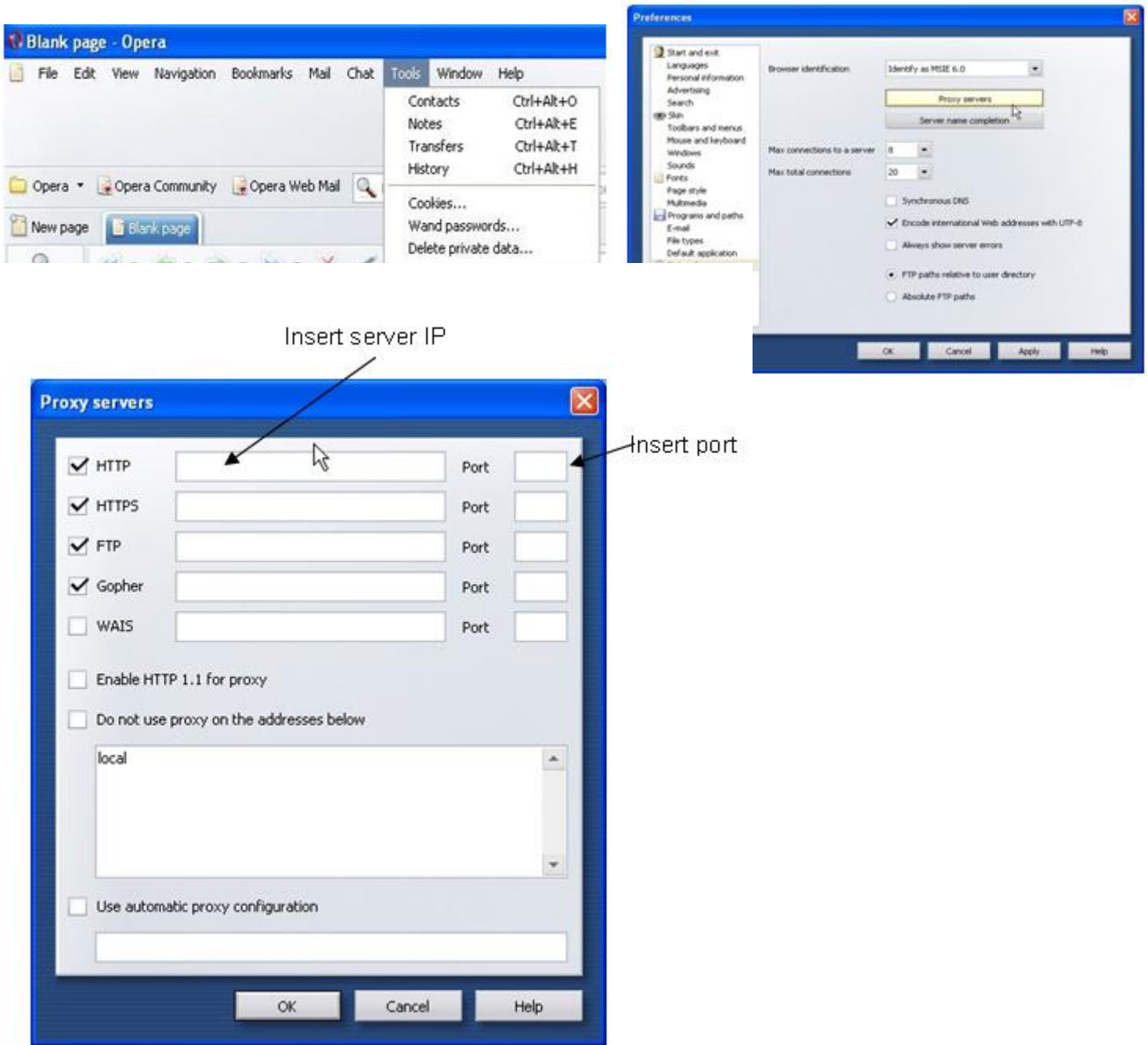
Go to Tools/Options/General/Connection Settings/Manual proxy configuration , insert HTTP proxy IP, (the computer where Cyclope Internet Filtering Proxy is installed), then insert the port. The DEFAULT PORT is 8080. It can be changed using the configuration utility.



Click OK to save changes.

### 2.3.3 Opera

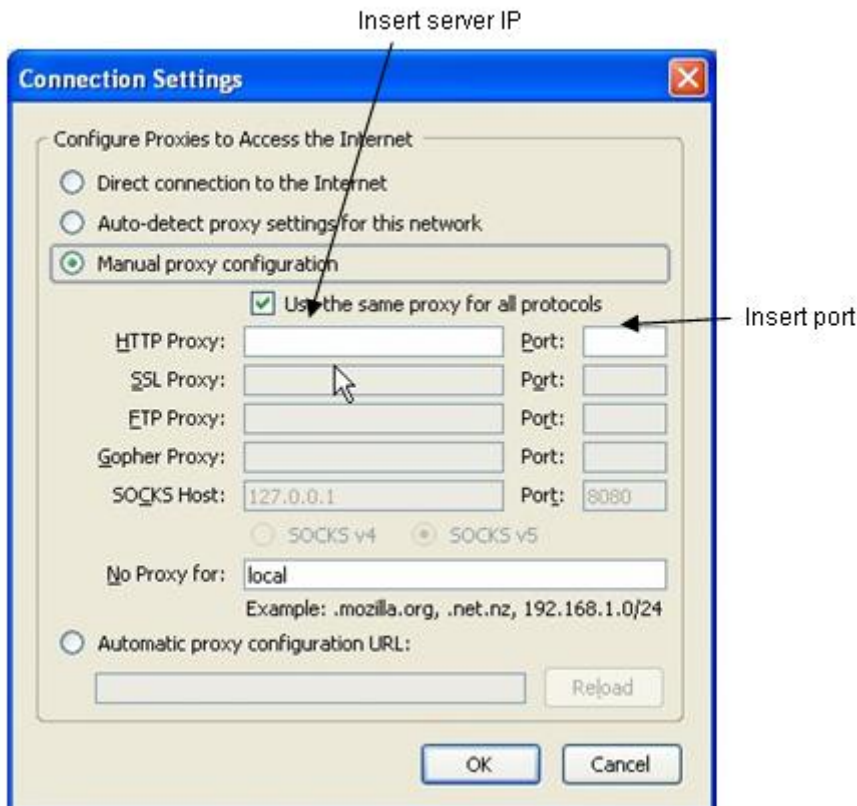
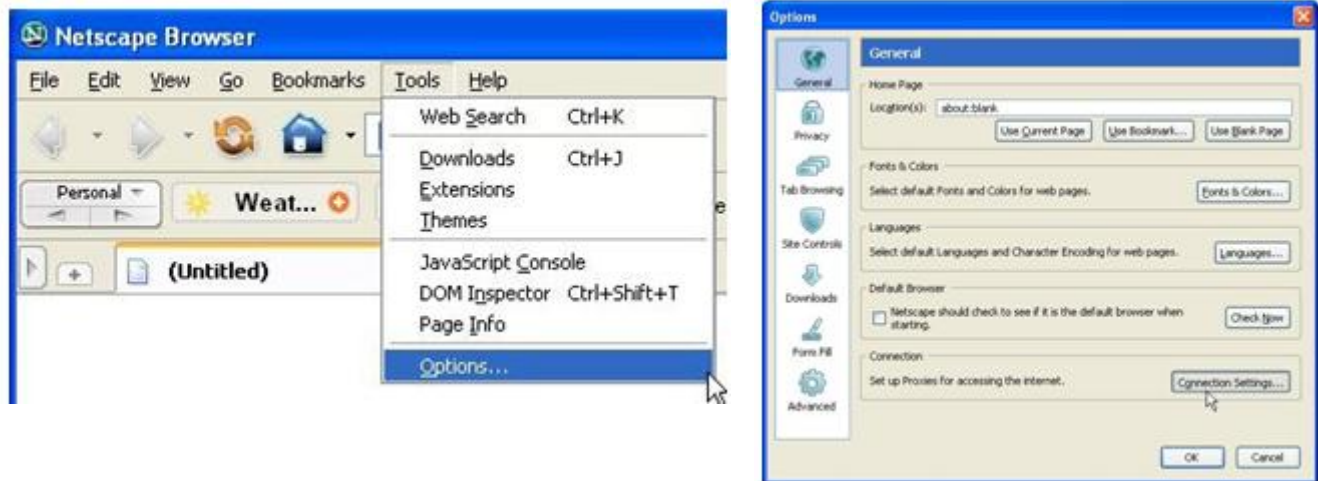
Go to Tools/Preferences/ Network/Proxy Server. The DEFAULT PORT is 8080. It can be changed using the configuration utility.



Click OK to save changes.

### 2.3.4 Netscape

Go to Tools/Options/ General/Connection Settings/ Manual Proxy Configuration.



Click OK to save changes.

### 3. Support



#### **E-mail Support**

For any technical related question please contact our technical support team: [support@amplusnet.com](mailto:support@amplusnet.com)

For any sales related questions please contact our sales support team: [sales@amplusnet.com](mailto:sales@amplusnet.com)



#### **Phone Support**

Our phone support lines (available during working days):  
+40 365 401269